

# HIGH QUALITY SUGAR MILL CHAIN



**brooks**  
andell



# Quality Sugar Mill Conveyor Chains

Brooks Andell Sdn Bhd offer a full range of quality Sugar Mill conveyor chains and sprockets, directly from their manufacturing plant in MALAYSIA. All components are manufactured to British specifications.

## SERVICES PROVIDED



- Design and advisory service.
- Installation advice and onsite mill commissioning



- Corporate training at head office or mill site



- All chains manufactured locally.
- Full warranty supplies direct from the factory.



- All products manufactured with full in line process inspection



# Brooks Andell Sugar Mill Conveyor Chain

## CONVEYOR CHAIN SPECIAL FEATURES

### Link Plates

Precision punched link plates giving high tolerance pitch control and maximum interference fits. Manufactured from high quality steel giving increased breaking load.

### Bushes

Heat treated machined bushes ensuring minimum distortion and superior concentricity.

### Split Pins

All chains assembled with split cotter pins for easy maintenance.

### Bearing Pins

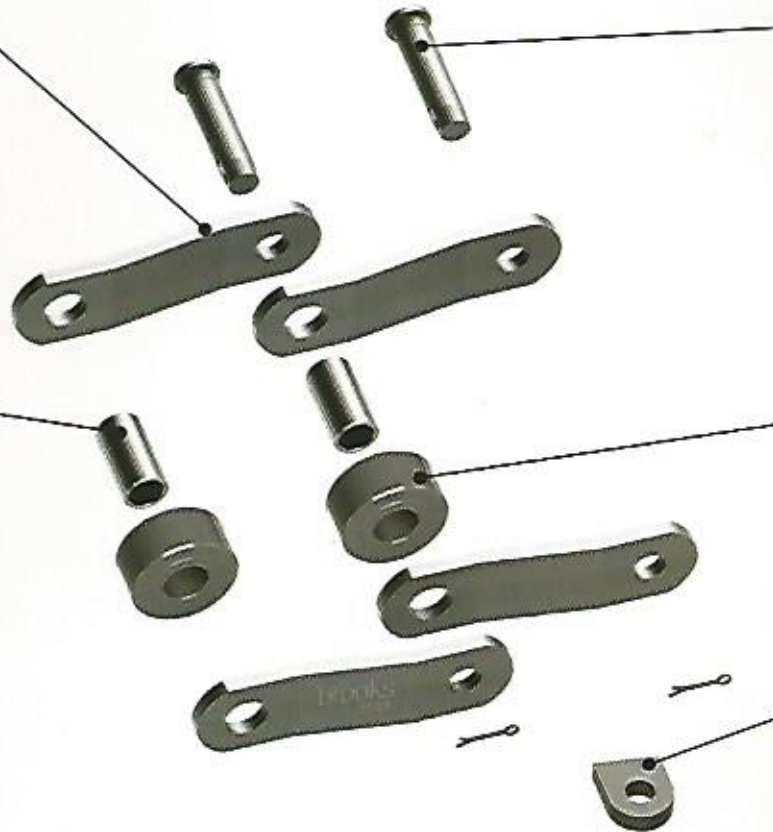
Fully machined and heat treated for ultimate wear resistance.

### Rollers

Rollers fully machined and case hardened giving excellent wear resistance and good load capabilities.

### Attachment Plate

Precisely manufactured attachments to secure scrapper plates.



## SPROCKETS



- Cast Iron
- Ductile Iron
- Split Cast design

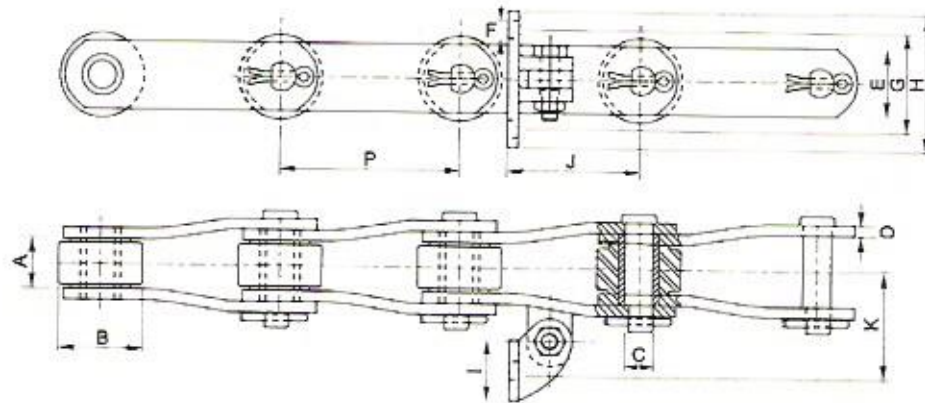


- Flame Cut Carbon Steel
- Machine Cut Carbon Steel
- Split Design



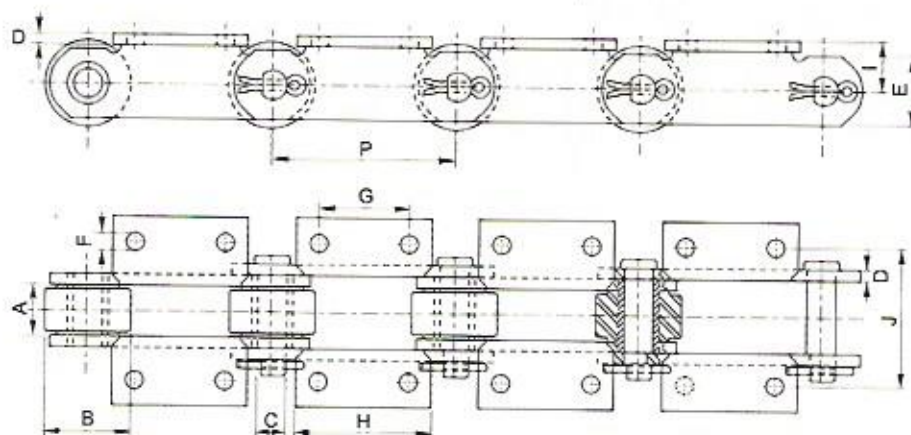
# Technical Specifications

## BAGASSE CHAIN



Chain number	Pitch mm	Breaking Load (kN)	Inside Width mm	Roller Diameter mm	Pin Diameter mm	Plate Thick mm	Plate Height mm	Attachment Hole Diameter mm	Attachment Hole Centers mm	Attachment Length mm	Attachment Width mm	Attachment Face mm	Transverse Pitch mm	Mass kg/m
	P		A	B	C	D	E	F	G	H	I	J	K	
BA9060	152.40	272	36.50	69.85	19.05	9.52	50.80	12.70	82.50	114.30	50.80	115.80	88.90	18.50
BA9061	152.40	386	36.50	69.85	19.05	9.52	57.15	12.70	82.50	114.30	50.80	115.80	88.90	20.30
BA9063	152.40	620	36.50	76.20	23.80	10.30	61.90	14.30	88.90	127.10	50.80	142.90	100.00	25.10
BA1796	152.40	445	36.50	69.85	22.23	9.52	57.15	12.70	82.50	114.30	50.80	115.80	88.90	22.90
BA2184	152.40	356	34.93	76.20	22.23	9.52	50.80	14.30	88.90	127.10	50.80	142.90	90.40	21.00

## CANE CARRIER CHAIN

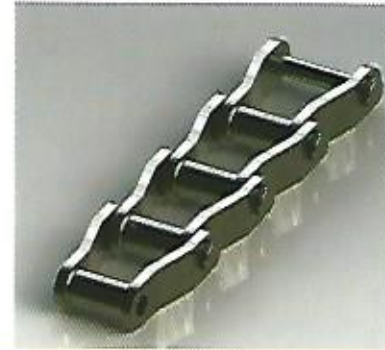
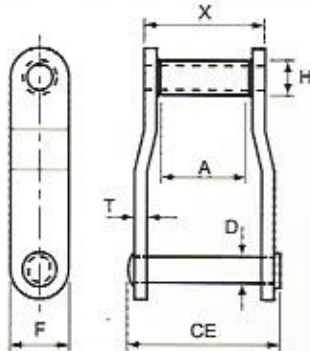


Chain number	Pitch mm	Breaking Load (kN)	Inside Width mm	Roller Diameter mm	Pin Diameter mm	Plate Thick mm	Plate Height mm	Attachment Hole Diameter mm	Attachment Hole Centers mm	Attachment Length mm	Platform Height mm	Transverse Pitch mm	Mass kg/m
	P		A	B	C	D	E	F	G	H	I	J	
BA9060	152.40	272	36.50	69.85	19.05	9.52	50.80	12.70	76.20	114.30	41.30	111.20	24.70
BA9061	152.40	386	36.50	69.85	19.05	9.52	57.15	12.70	76.20	114.30	41.30	111.20	25.30
BA9063	152.40	620	36.50	76.20	23.80	10.30	61.90	12.70	76.20	114.30	44.45	111.20	27.50
BA1796	152.40	445	36.50	69.85	22.23	9.52	57.15	12.70	76.20	114.30	41.30	111.20	26.20



# Technical Specifications

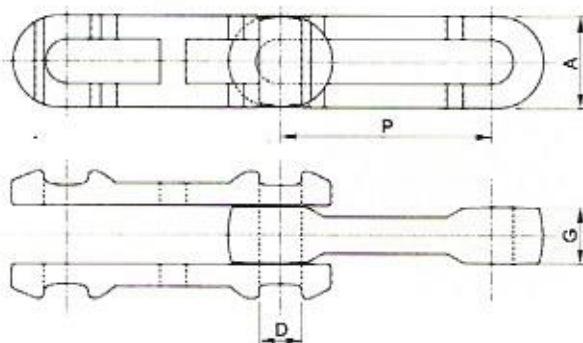
## WELDED STEEL CHAIN



Chain number	Pitch		Average Ultimate Strength lbf	Max. Working Load lbf	Approx. Links Per Foot	Average Weight lbf/ft	Dimensions mm						
	mm	Inches					CE	X	D	T	F	H	A
WR78	66.26	2.609	24000	3000	4.6	4.0	76.20	50.80	12.70	6.35	28.58	22.23	28.58
WH78	66.26	2.609	36000	3500	4.6	4.0	76.20	50.80	12.70	6.35	28.58	22.23	28.58
WR82	66.26	2.609	26000	3800	4.6	4.0	76.20	50.80	12.70	6.35	28.58	22.23	28.58
WH82	66.26	2.609	40000	4500	4.6	4.0	76.20	50.80	12.70	6.35	28.58	22.23	28.58
WR124	101.60	4.000	46000	6300	3.0	8.3	107.95	69.85	19.05	9.53	38.10	31.75	38.10
WH124	101.60	4.000	60000	7350	3.0	8.3	107.95	69.85	19.05	9.53	38.10	31.75	38.10
WR132	153.67	6.050	84000	13100	2.0	14.2	158.75	111.00	25.40	12.70	50.80	41.28	73.03
WH132	153.67	6.050	110000	15000	2.0	14.2	158.75	111.00	25.40	12.70	50.80	41.28	73.03

WH - Welded Steel Chain - fully heat treated  
WR - Welded Steel Chain complete with heat treated rivets

## DROP FORGED CHAIN



Chain number	Average Pitch mm	Pins mm	Overall Width mm		Chain Height mm	Link Thickness mm		Rated Working Load	Average Weight	Chain Part	Brinell Hardness	Average Ultimate Strength	Sprocket Unit No.
	P	A	B	C	D	E	F						
X458	102.39	16	55.63	26.92	35.05	16.00	17.53	4000	3.1	Side Link Center Link Pin	311/388 331/388 363/415	57000	458
X678	153.19	22.35	76.96	35.05	50.80	20.57	25.40	7100	6.5	Side Link Center Link Pin	311/388 331/388 340/415	125000	678
698	153.19	28.70	95.25	41.40	65.79	25.40	31.75	10800	12.5	Side Link Center Link Pin	311/388 331/388 340/415	175000	698